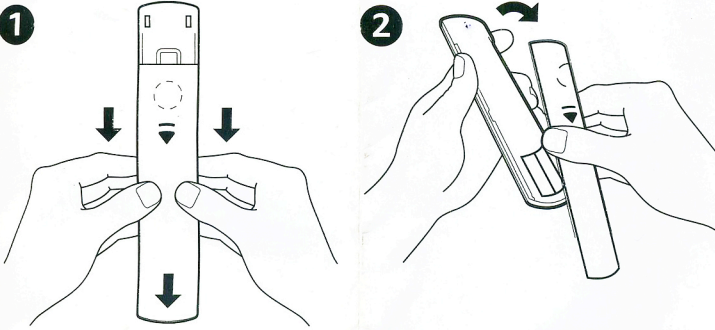


# TCL Voice Remote Control

## for Mini-LED QLED 4K UHD Smart TV

### ● Insert AAA batteries

Remove the battery door and insert the alkaline batteries into your Voice Remote.



### ● Follow the on-screen guide to pair the remote control with the TV when pressing the button for the first time.

**Hold the OK and  button simultaneously for 3-8 seconds for pairing.**

Press and hold the "HOME" and "OK" buttons on your remote at the same time. Keep your remote within 3 ft. of your TV during the pairing process.

